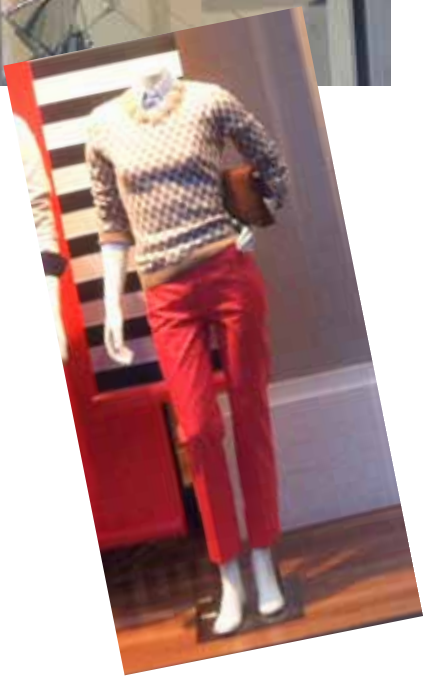


# ONE CLEAR CHOICE



*"Recognized by Window Film Magazine, the leading industry trade magazine as being the #1 COMMERCIAL WINDOW FILM COMPANY IN AMERICA"*



Security@NationalGlazingSolutions.com  
866-925-2083 ext. 801

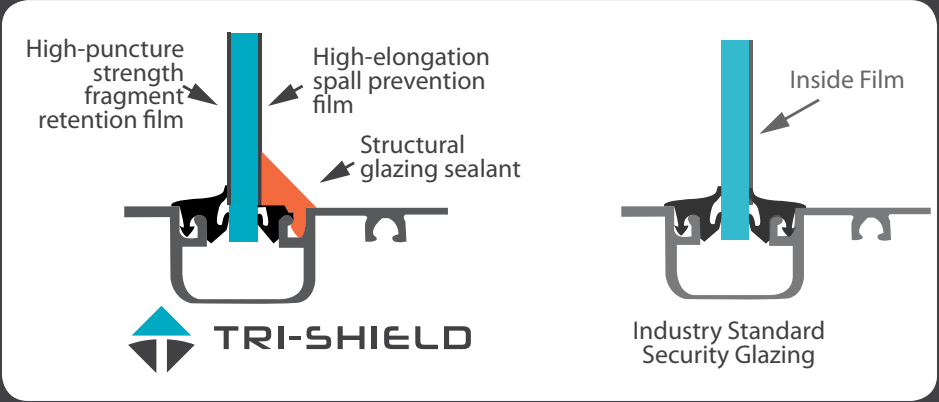
[ NationalGlazingSolutions.com ]

## GLAZING SECURITY SOLUTIONS

TRI-SHIELD is a low-cost improvement to existing glazing systems; increasing glass retention during attempted smash and grab theft.

TRI-SHIELD is unlike existing 'window film' solutions in that it utilizes proprietary encapsulation on both sides of the glass surface allowing the system to maintain the advantage of both the strength of the glass and the flexibility of the film through a prolonged break-in attempt.

SEE REVERSE FOR DETAILED TECHNICAL SPECIFICATIONS AND CONTACT US AT 866-925-2083 ext. 801 FOR CASE STUDIES AND PRICING.



## NATIONAL SECURITY SOLUTIONS

### DID YOU KNOW?

OVER **70%**  
Of intrusions are through the weakest point of entry — GLASS!

**FBI** STATISTIC:  
One burglary occurs every 14.4 seconds.

MORE THAN **\$13 BILLION**  
worth of goods are stolen from retailers each year.

TESTING STANDARD PROTOCOL	RESULT			
	Fragment Film	Spall Film	Structural Glazing Sealant	TRI-SHIELD System
ANSI Z 97.1	Unlimited	Unlimited		
ASTM C 0794			40 pounds per lineal inch after 7 day cure	
ASTM C 1135			50 psi tensile (25% elongation) after 21 day cure	
ASTM D 0412			350 psi tensile strength after 7 day cure	
ASTM D 1003-92	< 5% Haze	< 5% Haze		
ASTM D 1004	>18 lbf			
ASTM D 2582-09	7.4 lbf average			
ASTM D 882 Tensile		32,000 psi		
ASTM D 882 Break	240 pounds per lineal inch			
ASTM E 1886		Category B (Spall Film Tested with Structural Glazing Sealant)		
ASTM E 1996		Category B (Spall Film Tested with Structural Glazing Sealant)		
ASTM E 84	"A" Rating	"A" Rating		
ASTM F 1233-08				Passed 1.0 Body Passage
CPSC 16 CFR 1201		Category II		
GSA-TS01-2003		3A (4psi/28psi-ms; Spall Film Tested with Structural Glazing Sealant)		



**Storm and Blast Protection above Retail Level**

**TRI-SHIELD Offers Theft, Graffiti, Storm, and Blast Protection**

